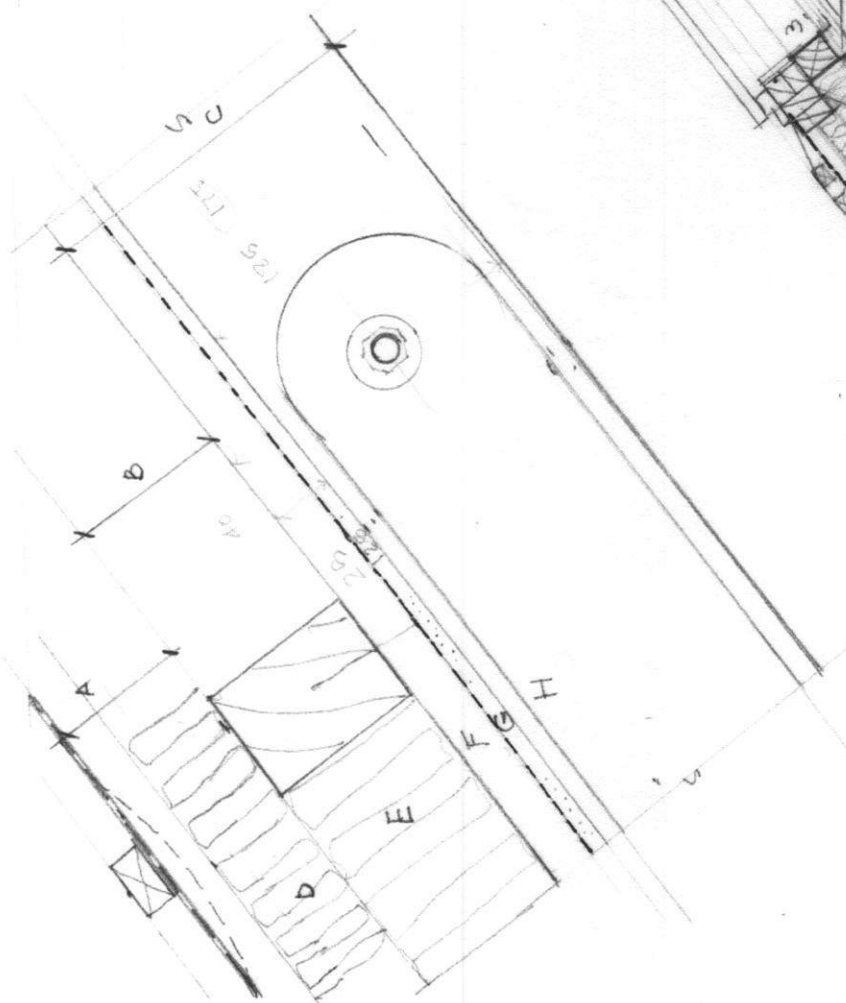


1. Existing principal rafters
2. 225.50 CE4 painted Douglasfir ties
3. GNP M20 bolts + washers 10 ms plate packers @ king post
4. Existing purlins (110.80)
5. Existing rafters (90.65) @ 400 d/s @ 40°
6. Existing ties removed (180/32)
7. Existing king post reduced with 1/4" shaped heel
8. 300.200.10 ms bed plate bolted to 300.

- A 90.65 existing rafters
- B 110.80 existing purlins
- C 225.75/95 existing principals
- D 60 Celotex FR 5000
- E 110 Celotex FR 5000 taped joints
- F 50.25 battens (service void)
- G 12.5 VC gypsum wall board + skim
- H 150.10 steel gusset plates - M20 bolts



4500 CLAM ANGLE BRACE

CR1 3 Purlins  
1028 x 860  
828 x 660 + couple

HW  
110T PURLIN

EXTENSION PIGTAIL

Note. Stonework is repaired in 3.5 NHL mortar & partition lining omitted in stairwell. [Internal wall]



1104  
W20  
05.12.14

Barn Conversion, Grange Farm, Monkton Lane, Monkton  
Barn : roof section  
1:20

11a struan terrace 10 537